

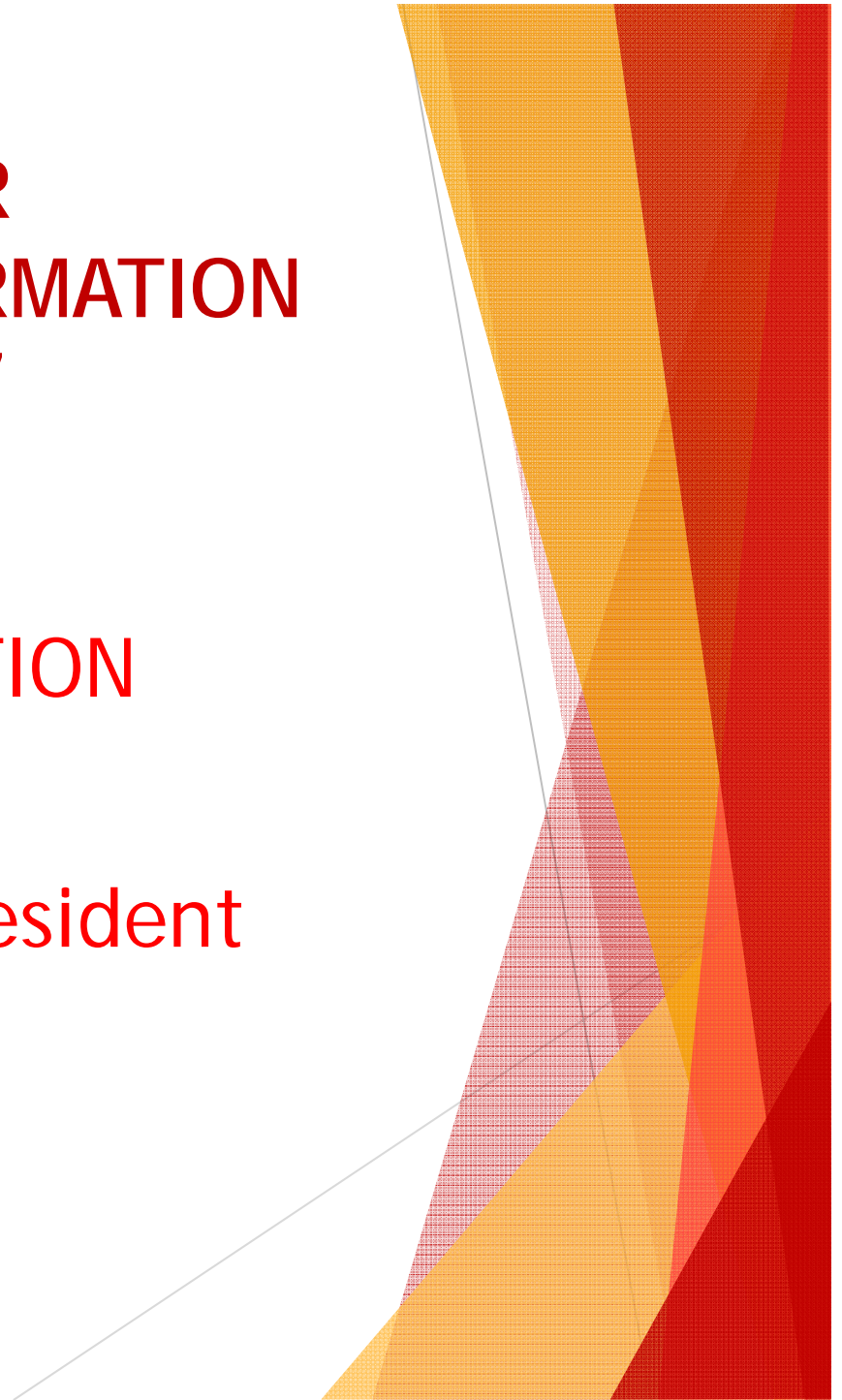


BBCBE

**BLACK BUSINESS COUNCIL
IN THE BUILT ENVIRONMENT**

CESA SEMINAR
LETS TALK TRANSFORMATION
7 NOVEMBER 2017

BBCBE PRESENTATION
by
Paul Kgole BBCBE President



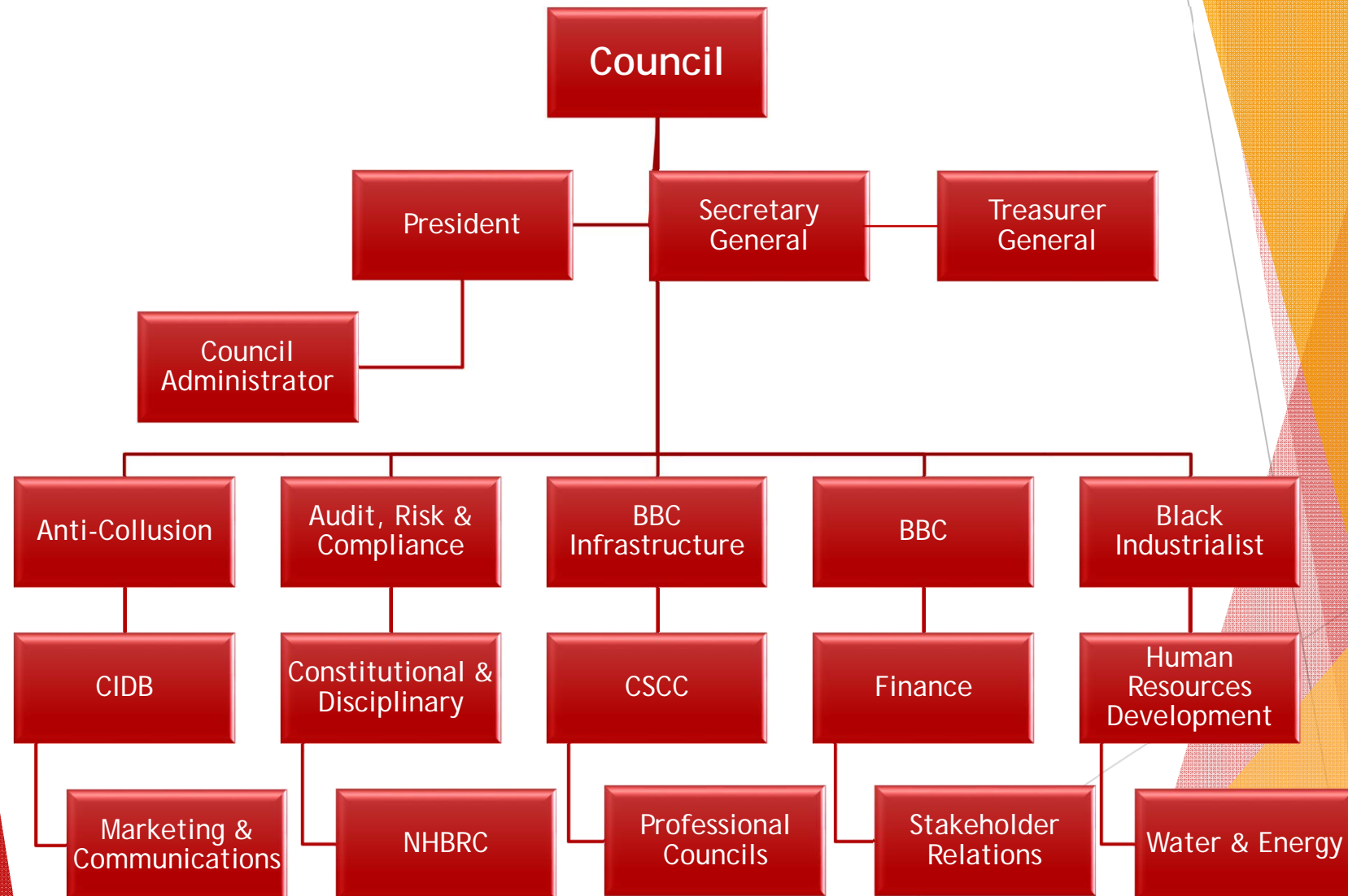
Brief Organizational Profile

- ▶ The Black Business Council in the Built Environment (BBCBE) is the apex organization of black construction and professional organizations in the country. It was established in 2007 and one of its main objectives is to engage government and other statutory bodies to influence the drafting and implementation of appropriate legislation in order to create an enabling environment for the black constituency in the building and construction industry.
- ▶ Our member organizations represent the interests of black businesses largely SMME's in the industry and a significant percentage of the membership is women and youth-owned. The underlying membership of these organizations is approximately 5000 companies. These members ply their trade in the built environment industry value chain from consulting through to construction.
- ▶ The BBCBE is affiliated to the Black Business Council (BBC).

The Purpose of the Organization

- ▶ The main purpose of the organization is to create an enabling trading environment for its members.
- ▶ The organization seeks to present the views , perspectives and position of black business in the built environment in one, consolidated voice.
- ▶ To facilitate significant participation of black business in the SIPS as coordinated through the PICC and other public sector projects.
- ▶ To facilitate the creation of black industrialists in the built environment sector.
- ▶ To partner with government, to the extent possible, to capacitate the state and its agencies, enabling it to have sufficient capacity to implement its infrastructure programme.
- ▶ To actively promote the interests of our members and stakeholders.
- ▶ To promote high standards of professionalism in the industry.
- ▶ To promote technical education and training ensuring consistent supply of skilled personnel to the industry and upholding quality standards.
- ▶ To conduct research in conjunction with statutory bodies to influence the policy outlook for the sector.
- ▶ To facilitate the entry and significant participation of our members in the private sector projects.

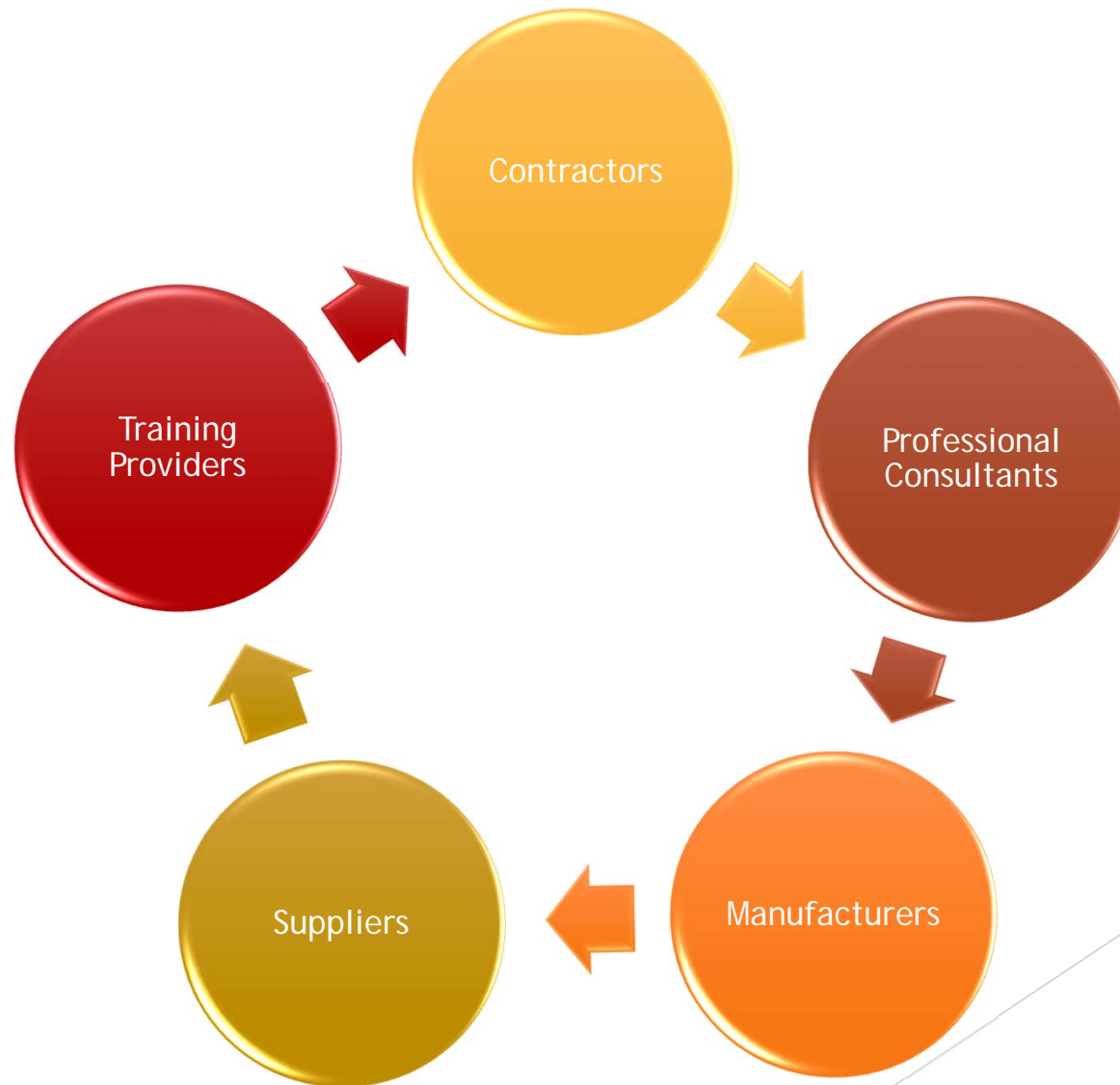
Organogram



Our Membership

- ▶ NAFCOC Construction (NAFCON);
- ▶ South African Women in Construction (SAWIC);
- ▶ Siyakha;
- ▶ South African Black Technical & Allied Careers Organization (SABTACO);
- ▶ South African Fire Development Association (SAFDA)
- ▶ CORPORATE MEMBERS
- ▶ BBCBE YOUTH

Categories/Sectors



MOUs

- ▶ Development Bank of South Africa (DBSA)
- ▶ National Treasury
- ▶ Square-Kilometre Array (SKA)
- ▶ CETA
- ▶ IDC
- ▶ FEM
- ▶ Lesotho Highlands Water Commission
- ▶ Airports Company South Africa

Lost in transformation

- ▶ “The inequalities of apartheid to which Mandela referred in 1990 were indeed a deeply ingrained problem. From 1917 until 1980 the per capita income of Africans had always been less than 10 percent of the per capita income of whites. The politico-economic system of white political dominance and racial capitalism, which had been in place for almost a hundred years, enriched and empowered the whites (especially the white corporate sector) undeservedly, and impoverished and disempowered blacks undeservedly. In the early 1990s there was a growing consensus in certain white and black circles that the nature of the transformation should be such that the whites (and the white corporate sector) would have to make financial sacrifices over a long period of time to address the systemic injustices of white political dominance and racial capitalism” Sampie Terreblanche, Author of Lost in Transformation

Demographic Dividend

- ▶ Wither a Demographic Dividend South Africa: The Overton Window of Political Possibilities - 27 September 2017:
 - ▶ Standard 3 education wide gap between whites and blacks narrowed over a period of time
 - ▶ Matric certificate wide gap between whites and blacks narrowed over a period of time
 - ▶ University degrees & tertiary qualifications the gap remains wide
 - ▶ Face of Poverty is black people and that of Unemployment is black youth
 - ▶ The Indian population has caught up on all above, with Coloureds in same position as blacks

Dr Pali Lehohla - Statistician-General

The numbers - Quantity

- ▶ There are more black students at universities and tertiary institutions including built environment professions (architecture, engineering, land surveying, project managers, quantity surveying, town planners etc.)
- ▶ There are some qualified black built environment professionals in corporate sector, with many in public sector.
- ▶ There are very few black professionals running their own companies, most of whom are without work.
- ▶ Many institutions such universities, voluntary associations, statutory bodies do have black presidents, heads of departments, CEO's etc.
- ▶ The demographics are slowly balancing out, but SA is an open society e.g. multinational companies

The Exclusion - Quality

- ▶ Candidacy programs - registration with Statutory Councils
- ▶ CPD
- ▶ Training vs own company
- ▶ Professional Indemnity Insurance
- ▶ Fees value minimum R50m - borrowed from CIDB ROC
- ▶ The client prerogative to appoint professional team - private sector excuse
- ▶ Multi national companies wiped out truly SA identity companies
- ▶ Professionals preference of international contracts (FIDIC, NEC)
- ▶ Writing specifications to strategically exclude black companies

Transformation real or perceived?

- ▶ Statutory Councils and Voluntary Associations have black presidents, CEO's and women but are they transformed?
- ▶ Private sector project notice boards have few or no black consulting companies names
- ▶ Awareness on differentiation between professional candidacy and emerging contractor development
- ▶ Relevance to construction industry matters;
 - ▶ Collusion and Corruption
 - ▶ Unregistered professionals
 - ▶ Discount of fees
 - ▶ Students at tertiary institutions
- ▶ Transformation on our own definitions and terms
- ▶



Thank You

Contact Us

- ▶ Black Business Council in the Built Environment
- ▶ Office: 011 728 3336
- ▶ Fax: 011 728 0331
- ▶ Email: admin@bbcbe.org
- ▶ Website: www.bbcbe.org
- ▶ Address:
 - ▶ Ground Floor
 - ▶ 35 Ferguson Road
 - ▶ Illovo
 - ▶ Johannesburg
 - ▶ 2196